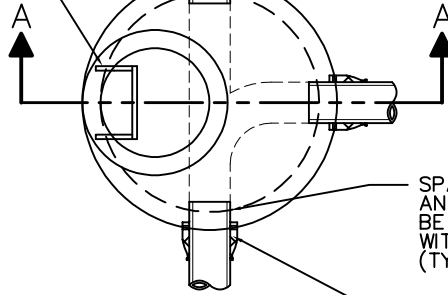


PLASTIC MANHOLE STEPS 1'-4" O.C.
M.A. INDUSTRIES CAT. NO. M.A. PS
IPF OR APPROVED EQUAL.

SANITARY SEWER SIZE
AS SHOWN ON PLANS



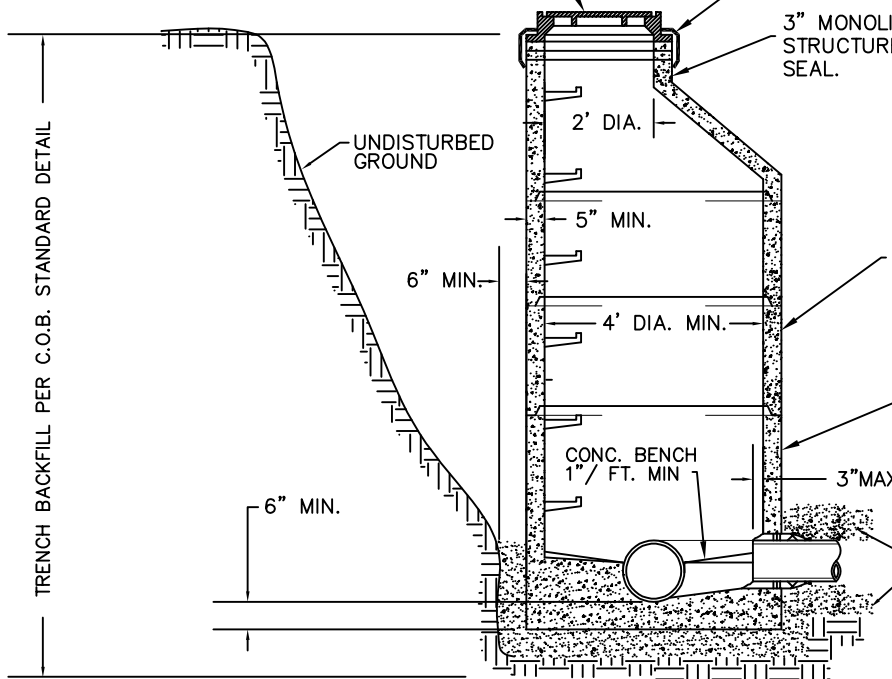
SPACE BETWEEN PIPE
AND WALL OF MANHOLE TO
BE COMPLETELY FILLED
WITH NON-SHRINKING GROUT.
(TYPICAL)

FLEXIBLE RUBBER WATER
TIGHT CONNECTOR PER ASTM
C-923

PLAN

EAST JORDAN NO. 1020 FRAME (OR APPROVED
EQUAL) AND SOLID LID WITH CONCEALED
PICKHOLES AND WATERTIGHT GASKET. LID SHALL
HAVE THE WORDS 'CITY OF BATAVIA', 'SANITARY
SEWER' (SEE SANITARY MANHOLE LID DETAIL).
SET FRAME IN BUTYL ROPE

8" MAX. (2 RINGS TOTAL) PRECAST
CONCRETE ADJUSTING RINGS SET IN BUTYL
ROPE. EXTERNAL CHIMNEY SEAL IS REQUIRED
FOR ALL FRAMES AND ADJUSTING RINGS IN
ALL AREAS OR APPLICATIONS, SEE C.O.B.
STANDARD DETAIL



3" MONOLITHIC LIP REQUIRED ON ALL
STRUCTURES FOR SEALING OF CHIMNEY
SEAL.

JOINTS SHALL BE EXTERNALLY SEALED WITH
A 6" OR 9" WIDE BAND OF RUBBER AND
MASTIC CONFORMING TO ASTM C-877.
TYPE 2 OR TYPE 3

PRECAST REINFORCED CONCRETE MANHOLE
SECTION(S) A.S.T.M. C-478-SET IN BUTYL
ROPE. SEAL LIFT LUG HOLES WATERTIGHT.

CRUSHED STONE OR CRUSHED GRAVEL,
CA-7 CLASS 1A. 12" MIN. COVER
REQUIRED. 6" MIN. REQUIRED UNDER
MANHOLE AND ALL PIPES.

SECTION A-A

NOTES:

1. INVERTS OF INCOMING PIPES SHALL BE DETERMINED BY MATCHING ELEVATIONS OF THE TOP OF ALL PIPES. FOR EXISTING SEWERS 15" OR GREATER, SEE APPROVED PLANS. ALL FLOW CHANNELS SHALL BE PRECAST INTO THE BENCH.
2. PRECAST CONCRETE MANHOLE SECTIONS SHALL BE MINIMUM 4 FT. DIAMETER FOR PIPE SIZES 8" THRU 18" DIAM. REFER TO APPROVED PLANS FOR MANHOLE DIAMETERS FOR PIPE SIZES GREATER THAN 18" DIAM.
3. ANY MANHOLE, WHICH HAS BEEN DISTURBED IN ANY WAY, INCLUDING BEING RAISED OR LOWERED, SHOULD BE CLEANED AND DRIED BEFORE RE-SEALING. AN APPROVED CHIMNEY SEAL IS REQUIRED. EACH EXPOSED JOINT SHALL BE SEALED WITH A DOUBLE LAYER OF BUTYL ROPE AND EXTERNALLY SEALED PER THE NOTE SHOWN ABOVE.
4. OUTSIDE DROP CONNECTION IS REQUIRED FOR INVERT VERTICAL SEPARATION OF 2 FT. OR MORE (SEE C.O.B. DETAIL).



**CITY OF
BATAVIA**

**CITY OF BATAVIA
PUBLIC WORKS DEPARTMENT**

SHEET: 1 OF 1
DATE: 1/1/16

SANITARY SEWER MANHOLE

STANDARD NO. 5.01